

### An Ideal Park Equipped With an Ideal Sanitary Water Supply System

ONE of the most attractive natural parks in the West is Union Park at Dubuque, Iowa. The accompanying pictures will serve to give some idea of the beauty of this park. To the enterprise of the Union Electric Co. of Dubuque and its able and

the one first mentioned. This gives a natural pressure and provides all the water required in the park.

There are several fire stations with hose and taps all over the ground for the purpose of watering the flowers and washing down the walks. This system also provides water for the sewerage

For other purposes there is a well at a distant point, 3,500 feet deep, on the top of which is a direct-connected Goulds

### A New Removable Casing Low Tank

THE Ideal Mfg. Co., of Detroit, Mich., are placing on the market a new specialty in the closet combination line which will appeal to the practical eye of our trade. It is called the Ideal Bentwood and removable casing low tank, which consists of a casing that may be placed over a low down tank protecting it

plumber who is interested in a good, reliable non-tinning plumber's paste. He is also manufacturing a new wiping cloth which he says requires no breaking in, as it is far superior to the best ticking. He expects a good demand from the plumbers for this cloth, as it fills a long-felt want for something of that kind. His ad. appears in this issue of the JOURNAL.

### Increase in Business

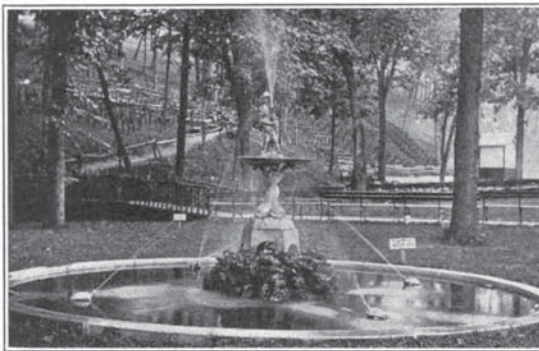
WE are advised by the Ohio Pump and Brass Co., of Columbus, Ohio, who manufacture the improved "Triumph" water lift, that their water lift sales for the months of July and August, 1908, have each shown an increase over the same months in last year—the increase averaging 18 per cent. for the two months named.

In times like these, this is certainly a record to be proud of, and especially so when you consider the fact that this company employs no traveling salesmen whatever, doing all of its business by mail. We extend our congratulations.

### Be It Ever So Humble

A BROOKLYN, N. Y., architect has filed plans with the Manhattan building department for the finest house in New York city:

The wee dwelling will be made out of a brick storehouse, which now stands in the rear of 447 West 46th street. The place is only 10½ feet high, 13 feet wide, 29½ feet long. The space will be taken up by a kitchen 9 feet 10 inches long, a bedroom 6 feet 8 inches long and a parlor 10 feet 4 inches long. A diminutive bathroom and a miniature hallway also will be sandwiched in. All light will come from a mullion window in front. The cost will be \$500.



Views in Union Park, Dubuque, Ia., where a Ten Thousand Dollar Sanitary and Water Works System are Installed

energetic manager, Mr. D. L. Mathes, thousands of visitors each year are indebted for the recreation and pleasure which Union Park affords.

Many forms of entertainment are furnished free. A high-class vaudeville is maintained and during the season some of the country's leading vaudeville artists appear on the Park's stage. Every convenience is provided for the pleasure and comfort of the visitors. The features which will interest our readers are the sanitary and water works system. They are models of their kind and installed under most adverse conditions. To get the water for the supply was a simple matter but the problem was how to dispose of the sewerage. It would have been contrary to the law to have turned it into any of the water courses, and being in a rocky, hilly section, and the park located in a valley there was no opportunity to pump it off into the wilderness and resort to the old and unsatisfactory filtering system. After a few men who were experienced in lead mining in that section had given the matter considerable attention, they finally put down a shaft 90 feet deep and struck openings in the rock which were large enough to take care of a plant ten times the size of the one planned for the park.

This shaft is about 6 feet square, is covered on the top and has a ventilator. The waste from the several toilet stations runs into the shaft through a 6-inch wrought pipe for which they had to drill a drift through the rock to the shaft.

This gives an ideal arrangement and will take care of the situation indefinitely.

For the water plant an 8-inch well was sunk to a depth of 250 feet; connected to the same is a motor-driven, deep-well type Yoeman's pump with a capacity of 25,000 gallons of water per hour. This water flows into a stone basin which has a cement bottom and 1¼-inch cement lining. A direct-connected, centrifugal Dean pump operated by a 15-horse-power motor picks the water up from the first basin and delivers it at the rate of 18,000 gallons an hour to a duplicate basin with an elevation of 65 feet over

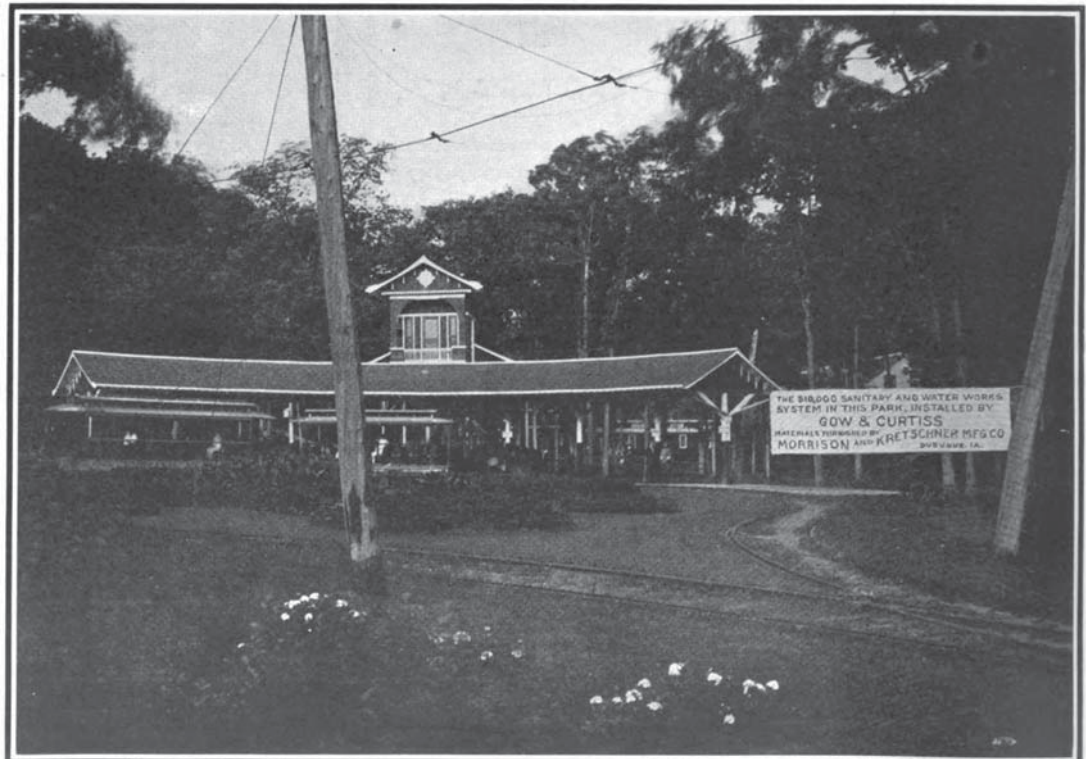
pump. This pump discharges its flow into a 20,000-gallon cistern, which is built below the earth line—this tends to keep the water cool.

The entire installation was by Gow & Curtis Co., one of the leading firms of plumbers of Dubuque. All the materials, including the fixtures, were furnished by the well-known manufacturers and jobbers of plumbers' supplies, Morrison & Kretschmer Mfg. Co. of Dubuque. The closets used were the M. K. "Double Flush" Low Down Combination, and the enameled Iron Urinals and Lavatories of the Standard Sanitary Mfg. Co. make.

from ill usage until decorating or building is completed, when said casing can easily be removed.

### Plumbers' Paste and Wiping Cloths

JOHN M. SADLER, of 452 W. Randolph street, Chicago, Ill., is manufacturing a plumbers' paste which he claims is the best paste that a plumber ever put on a lead pipe. He says that it will not tin no matter how often you wipe a joint over; he makes it in two forms, both dry and ready to use. He will be pleased to hear from any



View of the Trolley Station at Union Station, Dubuque, Ia., Furnished by Morrison & Kretschmer Mfg. Co. of Dubuque, Ia.